

Secondary Characters
Presents

MAMMA MIA!™

August 11-21
(604) 391-SHOW

The Chilliwack Cultural Centre

www.chilliwackculturalcentre.ca



MNP

LLP

*Congratulations
to the cast and
crew of
MAMMA MIA!*



Peter Dombowsky, CPA, CA
Partner
Peter.Dombowsky@mnp.ca

Come Build With Us

Contractors | Home Owners | Farmers

CANEX
BUILDING SUPPLIES LTD.



Contact Detail

- 📞 604-858-8188
- ✉ sales@canexbuilding.com
- 📍 46070 Knight Road, Chilliwack, B.C. V2R 1B7

Building And Framing
Door Division
Masonry & Landscape



Secondary Characters presents

MAMMA MIA!

music and lyrics by

BENNY ANDERSSON

BJORN ULVAEUS

and some songs with **STIG ANDERSON**

BOOK BY **CATHERINE JOHNSON**

ORIGINALLY CONCEIVED BY **JUDY CRAYMER**

MAMMA MIA! WAS ORIGINALLY PRODUCED IN LONDON BY JUDY CRAMER, RICHARD EAST AND BJORN ULVAEUS FOR LITTLESTAR IN ASSOCIATION WITH UNIVERSAL.

ADDITIONAL MATERIAL &
ARRANGEMENTS

MARTIN KOCH

MUSIC PUBLISHED BY UNIVERSAL MUSIC PUBLISHING GROUP AND
EMI GROVE PARK MUSIC INC. AND
EMI WATERFORD MUSIC INC.

Co-Founder and Artistic Director

SHELLEY WOJCIK

Director/Production Manager

Costume Designer

STEFFI MUNSHAW

Choreographer

ANN MATTERSON

Vocal Director

PAULA QUICK

Stage Manager

MICHAEL QUAGLIA

Orchestra Conductor

SHANNON GOLDSMITH

Set and Lighting Designer

DARREN BURKETT

Technical Director

JAMEA LISTER

Make-up and Hair Designer

ENVY MALLOWAY

Construction Manager

KRIS WARD

Props Assistant Stage Manager

SEBASTIAN DICKEY

MAMMA MIA!

Is presented through special arrangement with Music Theatre International (MTI). All authorized performance materials are also supplied by MTI.
www.MTIShows.com



DIRECTOR'S MESSAGE

STEFFI MUNSHAW

This show has been a long time coming; Shelley and I first discussed the possibility of putting on Mamma Mia back in the summer of 2019 after we finished the 25th Annual Putnam County Spelling Bee. Auditions were held in January 2020, two and a half months before BC shut down due to the Covid-19 pandemic. We made the difficult decision to cancel the show that summer, and crossed our fingers that we would be able to pick it back up for the following summer. A year later, restrictions still hadn't lifted enough for live theatre, so the show was again put off for another year until this summer.

So you can imagine how excited we are to finally mount this production!

Since our original auditions back in January 2020, we've had many cast members anxiously touching base, making sure we weren't giving up on the show. Unfortunately, in the time since our original casting process, many of our cast were unable to continue on with their plans to be in the show due to life events such as moving to pursue education, growing families with new babies, or health concerns. While we regret that those cast members weren't able to stay with us, we're incredibly grateful for the new cast members who have stepped up to fill their empty shoes and we hope you'll agree that they've done a terrific job!

Three years since we first thought of doing this show and two and a half years since the first round of auditions...while this has been the longest process for a show we've put on, it feels like rehearsals have finished in the blink of an eye. This show truly is a party of a show, and is exactly what we all need after several years of pandemic restrictions. We hope you sit back and enjoy the energy, life and joy that only ABBA can provide!

I'd also like to give a shout out to our choreographer, Ann Matterson. This talented artist has worked her tail off on this show, and I am so grateful for all of her help. Driving from her home in Tsawwassen to daily rehearsals has been no small feat, and Ann has shown up each day with such generosity of spirit and always with a smile and positive word of encouragement to all skill-levels of performers in our cast. She has gone above and beyond by scheduling extra one-on-one rehearsals to help performers increase their confidence and filming personalized videos with dance instructions for anyone and everyone who asked for them. It has been an absolute pleasure to have her join our creative team; she has been absolutely instrumental in making this show as full of life and celebratory as it is. I know you will thoroughly enjoy the creative, high-energy and hilarious choreography she has created.

MUSICAL NUMBERS

Overture

I Have A Dream.....	Sophie
Honey, Honey.....	Sophie, Ali, Lisa
Money, Money, Money.....	Donna & Company
Thank You For The Music.....	Harry, Bill, Sam & Sophie
Mamma Mia.....	Donna, Harry, Bill, Sam & Company
Chiquitita.....	Rosie, Tanya & Donna
Dancing Queen.....	Rosie, Tanya, Donna & Company
Lay All Your Love On Me.....	Sky, Sophie, Pepper, Eddie & Company
Super Trouper.....	Donna, Rosie, Tanya & Company
Gimme, Gimme, Gimme.....	Company
The Name Of The Game.....	Sophie & Bill
Voulez Vous.....	Company

~15 minute Intermission~

Concessions are available in the Lobby

Entra'cte

Under Attack.....	Sophie & Company
One Of Us.....	Donna
S.O.S.....	Sam & Donna
Does Your Mother Know.....	Tanya, Pepper & Company
Knowing Me, Knowing You.....	Sam
Our Last Summer.....	Harry & Donna
Slipping Through My Fingers.....	Donna & Sophie
The Winner Takes It All.....	Donna
Take A Chance On Me.....	Rosie & Bill
I Do, I Do, I Do.....	Sam, Rosie, Tanya, Donna & Company
I Have A Dream.....	Sophie & Company
Bows.....	Company

(sing and dance along to the bows)

*Mamma Mia
Dancing Queen
Waterloo*

THE CAST



Sophie - LAUREN CLIFT

Lauren is thrilled to be a part of one of her all-time favourite musicals! Lauren has been singing her way through life from a young age. She has performed in *Sunset Boulevard*, *Bye Bye Birdie*, *Oliver*, and most recently Secondary Characters' production of *Sweeney Todd* as Johanna. Lauren would like to give a special thanks to the wonderful cast and crew and especially to her family and grandparents who brought musicals into her life at a young age. To them, she can only say "Thank-you for the music."



Pepper - SEBASTIAN DICKEY

Having graduated from Chilliwack Secondary School in recent years, Sebastian is currently working with the hope of saving for his future endeavours. Sebastian has a passion for performance and musical theatre, so he's elated to make *Mamma Mia* his second performance with Secondary Characters, his first being *Sweeney Todd: The Demon Barber of Fleet Street* last October.



Lisa - HARRIET DYKSTRA

Harriet is a Vancouver-based actor, singer, and theatre instructor. She has been involved in theatre for twelve years. This is her first show with Secondary Characters and she is thrilled to be stepping into the role of Lisa. Harriet's past credits include Katherine Plumber in *Newsies* (Windsor House), Heather Duke in *Heathers* (Windsor House), Ren McCormack in *Footloose* (Tes Theater), and many more. Harriet has loved working with this phenomenal cast and crew and hopes you enjoy the show.



Ensemble - ANDREW GILLOT

Andrew is excited to be returning to the Secondary Characters stage once again, after performing as Judge Turpin in *Sweeney Todd: The Demon Barber of Fleet Street*. Other recent acting credits include Christopher Marlowe in *Shakespeare in Love* (TiC), and Joseph Pulitzer in *Newsies* (CESOA). Andrew is a graduate of both UFV and UVic Theatre programs where he was involved in many productions as an actor, director, and musician. Andrew is also an independent singer-songwriter. You can follow his musical adventures @andrewgillott.music.



Harry - JEFF HANSON

Jeff is elated to join Secondary Characters again for their production of Mamma Mia! Having the music of ABBA influence his early years, it's been a joy for Jeff to be a part of this team. Jeff previously performed in Secondary Characters' 2016 production of The Wizard of Oz. Jeff is a Middle School Math and Science teacher, and has raised three children with his wife, Patti. In some form, the entire Hanson clan has been involved with musical theatre. Jeff would like to thank his supportive family for giving him the inspiration to keep performing, as well as Steffi, Ann, Paula, and Michael. Enjoy the show!



Ensemble - KIMBERLY IVERSEN

This is Kimberly's third production with Secondary Characters, having previously appeared in Sweeney Todd: The Demon Barber of Fleet Street and Elf: The Musical. Kimberly's other credits within the community include Anne of Green Gables: The Musical and Urinetown. Outside of theatre, she enjoys playing the flute, stitching embroidery, and spending time with her nieces and nephews.



Ensemble/Assistant Choreographer - MICHAEL KIRK

Michael is very excited to be joining the cast of Mamma Mia this summer. Michael has been performing for most of his life starring in roles such as Gaston in Beauty and the Beast, Lord Farquaad in Shrek: The Musical, and Kristoff in Frozen: The Musical, but this is his first production with Secondary Characters. Michael has recently found a love for choreography. He started choreographing last year for Delta Youth Theatre's production of Matilda, and most recently assisted Ann Matterson in this production of Mamma Mia! Michael would like to thank his friends and family for the endless support and hopes you enjoy the show!



Ensemble - ANITA KRAUSE

Anita is thrilled to be performing in Secondary Characters' production of Mamma Mia! She would like to thank her family for encouraging her to do musical theatre.



Ensemble - LAURA MADSEN

Laura began pursuing her musical interests through classical piano but finds being a part of vocal harmonies infinitely varied and exhilarating. She has enjoyed acting in productions of Snow White (Chilliwack Players Guild), The Hunchback of Notre Dame (Secondary Characters), and in the chorus of Susanna (Denman Island Baroque Festival). In the past few years, she has enjoyed singing a cappella with the Green Mountain Quintet, and is currently part of Paula Quick's Philharmonica Chorus. Laura is thrilled to be part of Secondary Characters' production of Mamma Mia, and hopes the joy and energy of this production will make you want to hug the people you love and sing all the way home!



Ensemble/Make-up and Hair Design - ENVY MALLOWAY

Envy is thrilled to be performing in their second production with Secondary Characters, having previously performed in Sweeney Todd: The Demon Barber of Fleet Street, and to be doing hair and make-up for the show. In high school, Envy performed in Aladdin, The Christmas Carol, and Willy Wonka & The Chocolate Factory. Envy first became interested in musical theatre when they saw Secondary Characters' production of The Hunchback of Notre Dame. Envy would like to thank Secondary Characters for the opportunity to partake in another production, and they hope to learn even more about musical theatre in future shows.



Ali/Choreographer - ANN MATTERSON

Ann is a Vancouver-based choreographer, singer, performer, and performing arts teacher majoring in jazz and contemporary voice at Vancouver Community College. She is very excited to be making her Secondary Characters debut as choreographer on the production team, and as Ali in the production. Ann has been involved in various productions across the Lower Mainland, most recently on the choreography team for Spamalot and Robinson Crusoe (White Rock Players Club), and Little Shop Of Horrors (Delta Secondary Theatre Company). Previous choreography works include Oliver and The 25th Annual Putnam County Spelling Bee (Delta Secondary Theatre Company). She would like to thank her parents for the endless support and hopes you enjoy the show.



Ensemble - MADELINE McCULLOCH

Madeline is 21 years old and is going into her final year of the Elementary Teacher Education Program at the University of Victoria. This is her third production with Secondary Characters, as she had roles in both The Wizard of Oz and The Hunchback of Notre Dame. She is very excited to be back on the stage and would like to thank her family and friends for supporting her! Have a great show everyone!



Sam - RANDY NEWBURY

Randy has been involved in the theatrical arts for over 40 years. His passion for theatre ignited at the age of 14 when he was in the chorus of *The Music Man* (St. Marys Community Players), where he met and fell in love with his now wife, Susan Newbury. Since then, he has acted, sang, danced, stage managed, designed, directed, and produced dozens of productions locally and in south-western Ontario. He and his wife, Susan, have raised three beautiful daughters, and he loves to travel in his spare time. Randy dedicates this performance to his mother who played ABBA records every Saturday while doing housework when he was a child. He only hopes that you, the audience member, enjoys the show as much as he's had working on it.



Rosie - SUSAN NEWBURY

Susan has enjoyed dance and theatre from a very young age. Even though the pandemic has kept her off the stage for too many years, the challenge of *Mamma Mia* has got Susan back in her game! Susan would love to visit Greece one day but for now, she imagines the gorgeous country in this lovely and funny musical that she has the privilege to play Rosie and work with a hard working and talented cast, crew, and orchestra. Susan would like to dedicate this show to her lovely daughters, Coneitia, Celeste, and Chloe, "cause somewhere in the crowd there's YOU!", and to her husband, Randy, who always reminds her that even as they age, they can always enjoy a little theatre of song and dance to keep them young and to keep the spark going!



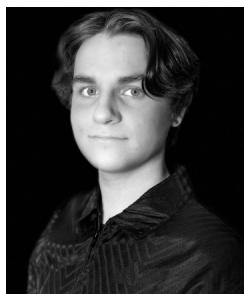
Eddie - JOSH POWER

This is Josh's third show with Secondary Characters. His previous credits with Secondary Characters were *The Hunchback of Notre Dame* in 2018, and *Elf: The Musical* in 2019. He is thrilled to be doing live theatre again and hopes you enjoy the show.



Bill - WARREN SCHATZ

Warren was only recently introduced to the world of musical theatre when he was "convinced" to audition for Newbury Art Concepts' production of *The Music Man* in 2018 and landed the part of Con-stable Stock. Warren is grateful to Raelyn, and Susan and Randy who introduced him to this world of creative and supportive people, and he's excited to be a part of this production. He hopes it's never too late for an old dog to learn new tricks!



Sky - AIDEN SHARPE

Aidan is stoked to be in this production of Mamma Mia! Jumping into the role with only a few weeks left before opening has been a wild experience, but has also been so much fun. Some of Aidan's past credits include Jack Kelly in Newsies, and Mortiz Stiefel in Spring Awakening. Aidan hopes everyone watching lays all their love on this show!!



Ensemble - DEBORA SOUTAR

Debora has been singing along to her Mamma Mia DVD for many years, and is tickled to be a part of this live show in Chilliwack, her hometown! Her previous theatre experience includes behind the scenes work for the UVF'S productions of As You Like It and Paper Wheat. Debora has always sung in a church choir, and loves the thrill of being part of a chorus. During the COVID-19 pandemic, Debora obtained a bachelor's degree in Integrated Studies/Wetland Conservation. She continues to volunteer as an environmental educator and advocate for climate change action. Debora's next career goal is to be elected as a City Councillor.



Ensemble - JENNIFER STEVENS

Originally from Vancouver Island, Jennifer has participated in many community theatre productions over the years. Notably playing one of the lead characters, Tess in The Lottery. Most recently, Jennifer's biggest role has been mother to her two sons Christian and Isaac with her husband Graeme. Jennifer is thrilled to be stepping back into the world of musical theatre, and to be a part of this production.



Tanya - STEFANIE SWINNARD

Stefanie is thrilled to be performing in Chilliwack, her hometown, again. An award-winning classical and musical theatre vocalist, Stefanie grew up performing in Chilliwack for more than 15 years and has performed with many companies in the lower mainland, including Theatre Under the Stars and Royal City Musical Theatre. Stefanie is an honours graduate of both the University of the Fraser Valley and Douglas College Theatre and Music programs, respectively. In 2013, Stefanie founded the The Stage Musical Theatre Academy in New Westminster in hopes that she could continue to enhance the lives of young people through the arts.



Father Alexandrios - RALPH VERHAGEN

Ralph is thrilled to be involved in Secondary Characters' production of *Mamma Mia!* For Ralph, it's been a while since his performance in *Elf: The Musical*, *The Music Man*, *Oliver*, *For Groom The Bell Tolls*, and *Bye Bye Birdie*, so returning to live musical theatre has been wonderful. Ralph has found the enthusiasm and energy of the cast and crew to be invigorating and catchy. In addition to theatre, Ralph also sings in the chorus of the Chilliwack Symphony Orchestra, which restarts this fall after a long hiatus due to covid. Ralph finds virtual theatre and concerts to be okay, but the live music of the performances is magic.



Donna/Artistic Director - SHELLEY WOJCICK

Shelley has been creating and performing musical theatre for over 20 years for various theatre companies and schools throughout Chilliwack. Some of her favourites include *Seussical* (CSOPA), *A Funny Thing Happened on the Way to the Forum* (UFV), *Into the Woods* and *The Hunchback of Notre Dame* (Secondary Characters). Shelley is a science, theatre and education graduate of UFV, is co-Founder and Artistic Director for Secondary Characters, and is currently teaching in the supported learning program for Squiala Secondary School. Shelley would like to thank Steffi, Ann, Paula, and Michael for their passion and dedication to this project, and her loving family for their support.

THE CREW

Stage Manager: Michael Quaglia

Rehearsal Pianist: Jennifer Silva

House Technician and Sound Operator: Jamea Lister

Lighting Operator: Becki Cormier

Set Constuction: Kris Ward, Pete Quaglia, Michael Quaglia, Pam Quaglia, Jeff Hanson, Andrew Gillot, Harriet Dykstra, Madeline McCulloch, Kimberly Iversen, Paul Wojcik, Daniel Fortin.

Set Painting: Pete Quaglia, Pam Quaglia, Michael Quaglia, Madeline McCulloch, Shelley Wojcik, Steffi Munshaw, Darren Burkett.

Costume Design and Construction: Steffi Munshaw

Program Design: Shelley Wojcik

Lobby Display: Steffi Munshaw

Opening Night Gala: Melinda Weiss

Artwork: Jay Rettich

THE ORCHESTRA

Conductor - Shannon Goldsmith

Keyboard 1 - Jennifer McGregor

Keyboard 2 - Sandra Bower

Keyboard 3 - Jennifer Silva

Keyboard 4 - Brandon On

Guitar 1- Markus Westenenk

Guitar 2 - Greg Cross

Bass Guitar - Carson Loeppky

Percussion 1 - Paul Blessin

Percussion 2 - Ann Griffiths

THE CREATIVE TEAM



Director/Production Manager/Costume Designer - STEFFI MUNSHAW

A self-confessed student for life, Steffi holds a Diploma in Theatre Performance from Douglas College, both a BFA with a Major in Theatre Performance and BED from SFU, and a Masters in Indigenous Educational Leadership from UBC. Performing everything from classics to contemporaries and from opera to absurdism, Steffi loves creating newly imagined works of art and has performed with many theatre companies throughout the Fraser Valley. In what little spare time she has left, Steffi also loves working backstage in theatre having stage managed, dramaturged, artistic directed, directed, musical directed, and designed many shows in both Chilliwack and Vancouver. When not at rehearsals, Steffi keeps busy as the Principal at Squiala Elementary School.



Vocal Director - PAULA QUICK

Paula Quick is a well-known Voice Instructor in the GVRD with significant experience in the areas of recital, musical theatre, opera, and operetta. As an instructor, apart from the preparation of numerous operetta and opera voice soloists for performances in their respective media, she has also coached numerous vocalists and choruses for presentations in musical theatre under the auspices of the Chilliwack Musical Theatre (Chilliwack Academy of Music) until 2005, and thereafter under the auspices of Secondary Characters. Paula continues to enjoy performing cameo roles, as she did in Secondary Characters' 2021 production of Sweeney Todd as the character, Adolfo Pirelli. Such fun!!! She is grateful to still be asked to participate "in the game," and hopes to assist with many future musical presentations by Secondary Characters. This "wheel" is very well oiled and deserves the weight of Chilliwack's support. Don't fail to pass on the enjoyment, and the many ways to take part.

THANK YOU

Squiala First Nation, Creative Edge, Andrew Gillot,
Peter Dombowsky, Debra Cross, Creative Outlet,
Chilliwack Secondary Music Department, Chilliwack Walmart,
Brennan Sinclair, Ebony Munro, Aurora Munro, Greg Cross,
Jennifer McGregor, Christ Lutheran Church, Kris Ward, Edna Hobbs,
Jay Rettich, and Melinda Weiss.

SECONDARY CHARACTERS' BOARD OF DIRECTORS

Kris Ward, Randy Newbury, Paula Quick, Steffi Munshaw,
Stefanie Swinnard, Jeff Bodner.

THANK YOU TO OUR SPONSORS

Actor's Circle

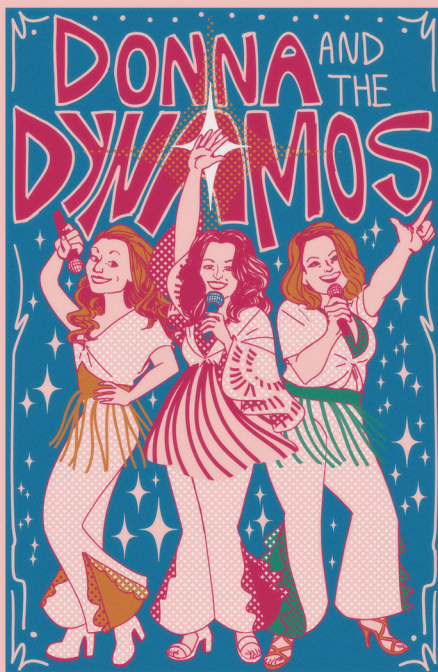


Backstage Fan



Friends

Beach Dogs Veterinary Walk-In Clinic
Chilliwack Pharmacy
Hofstede's Country Barn



Artwork by
Jay Rettich

Rainforest PAINTING

KING'S MUSIC

25 Years!

KYLE HISLOP



604-795-1616 | SlapSOLDonit.com | kylehislop@gmail.com

TABLE GAMES NOW OPEN!

TABLE GAMES HOURS

SUNDAY, MONDAY, THURSDAY, FRIDAY & SATURDAY
4:00PM - 12:00AM

WWW.ELEMENTSCASINOUCHILLIWACK.COM

8180 YOUNG ROAD, CHILLIWACK, BC V2P 4N9 | 604.701.3800



ELEMENTSCASINO
IT'S ALL HERE | CHILLIWACK

belc

Know your limit, play within it. **GameSense**

19+